



RUSSIAN HIGHWAYS STATE COMPANY

July, 3rd, 2016, Rome

▶ AVTODOR STATE COMPANY

- Established in 2009
- Founder – the Russian Federation
- **Authorized by the Russian Federation** for the implementation of investment projects of roads construction with attraction of private investments
- Implements the governmental decision to form the "North-South" and "West-East" **transit road corridors** through the territory of the Russian Federation
- The leader in **application of innovative technologies** and approaches in the investment, design, construction and operational areas of the road industry of the Russian Federation



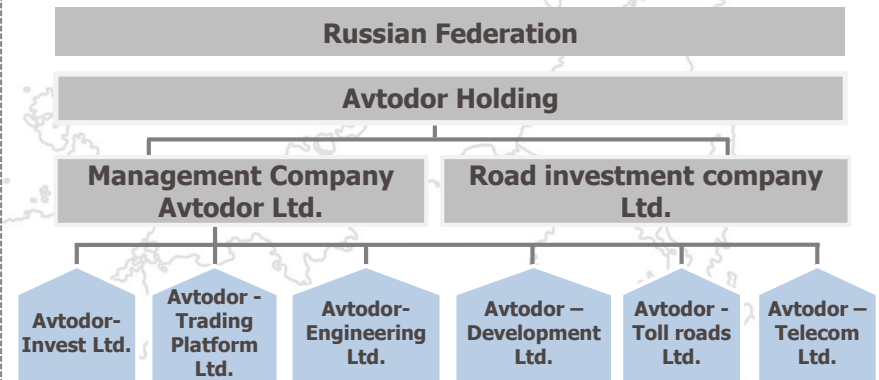
- Operates in the Russian Federation **in accordance with the existing legislation** and in cooperation with the Ministry of Transport of the Russian Federation and the Government of the Russian Federation

▶ ABOUT COMPANY / 1

Company today

- Investment program till 2020: EUR 21.6 bln*
- Investment projects: >20
- 16 investment PPP projects with a contractual value of around EUR 3.1 bln*
- Commissioned roads (construction and reconstruction, 2010-2016): 676 km
- Length of toll sections in operation: 718 km
- The number of staff: 520 people

Organizational structure



Company by 2020

- USD 7.6 bln* of private funding will be attracted
 - 3,905 km of roads under management
 - 733 km of existing roads will be reconstructed
 - 1,239 km of new roads will be constructed
 - Length of toll road sections 1,788 km
- Expected length of the roads under management by 2030 : 12,000 km

* ex rate EUR/ RUB = 67

▶ ABOUT COMPANY / 2

Toll Sections

- Constant growth in number of toll sections
- Improved efficiency of the maintenance costs
- Increasing the intensity of passages through toll points
- The use of electronic payment systems
- Customer loyalty programs



Innovations

- Formation of the regulatory framework (organization standards development)
- Formation of innovative system in road management
- Introduction of new technologies of design and construction, the use of innovative building materials



Environment

- Ensuring environmental safety at all stages of construction and maintenance of roads
- Generalization of international experience and identification of assessment criteria of Avtodor eco-efficiency prescribed by Avtodor "Green Standard"
- Development and application of Avtodor Environmental Policy



Road Safety

- Traffic monitoring
- Emergency hotline on the roads
- Emergency road service
- Meteorological service
- Lighting and barrier fencing
- Arrangement of signs and signaling panels of high-risk areas



▶ INTERNATIONAL COOPERATION

Avtodor State Company actively cooperates with international companies, adopts and adapts the best foreign practices

International Road Associations



International Partners



▶ EXPERIENCE OF SUCCESSFUL COOPERATION WITH ITALIAN COMPANIES (ASTALDI)



Astaldi is the general contractor of the consortium of investors in the framework of the project of financing, construction and toll operation of the highway "Moscow-St. Petersburg Highway", sections km 543 - km 646 and km 646 - km 684".

Location:	Leningrad region
Length of toll section:	138 km
Traffic volume*:	18,000 – 26,000 vehicles per day*
Road category:	1A
Lanes:	6/4
Total cost**:	EUR 1.15 bln**
Public capital:	75%
Private capital:	25%
PPP model:	Availability payments concession
Contract terms:	27 years
Tender close date:	November 2014
Construction schedule:	2015-2018



Project status:

Construction.
Commissioning – June 2018

*the first 3 years of operation

** respective years; ex rate EUR/ RUB = 67

▶ EXPERIENCE OF SUCCESSFUL COOPERATION WITH ITALIAN COMPANIES (ANAS S.p.A.)



Cooperation between Avtodor Group of Companies and ANAS S.p.A. is aimed at creating a consortium for the development of Russian road infrastructure and road operation. Pilot project is investment in the project of complex development of M-4 "Don" highway.



Location:	Rostov region, Krasnodar region
Length of toll section:	228 km
Traffic volume*:	30,000 vehicles per day*
Road category:	1B
Lanes:	6/4
Total cost**:	EUR 0.1 bln**
Public capital:	55%
Private capital:	45%
PPP model:	Operator contract
Contract terms:	14 years
Construction schedule:	2016-2018

Project status:

On 17th of May 2017 a cooperation agreement was signed between Avtodor, Russian Direct Investment Fund, ANAS S.p.A. and ANAS International Enterprise S.p.A.

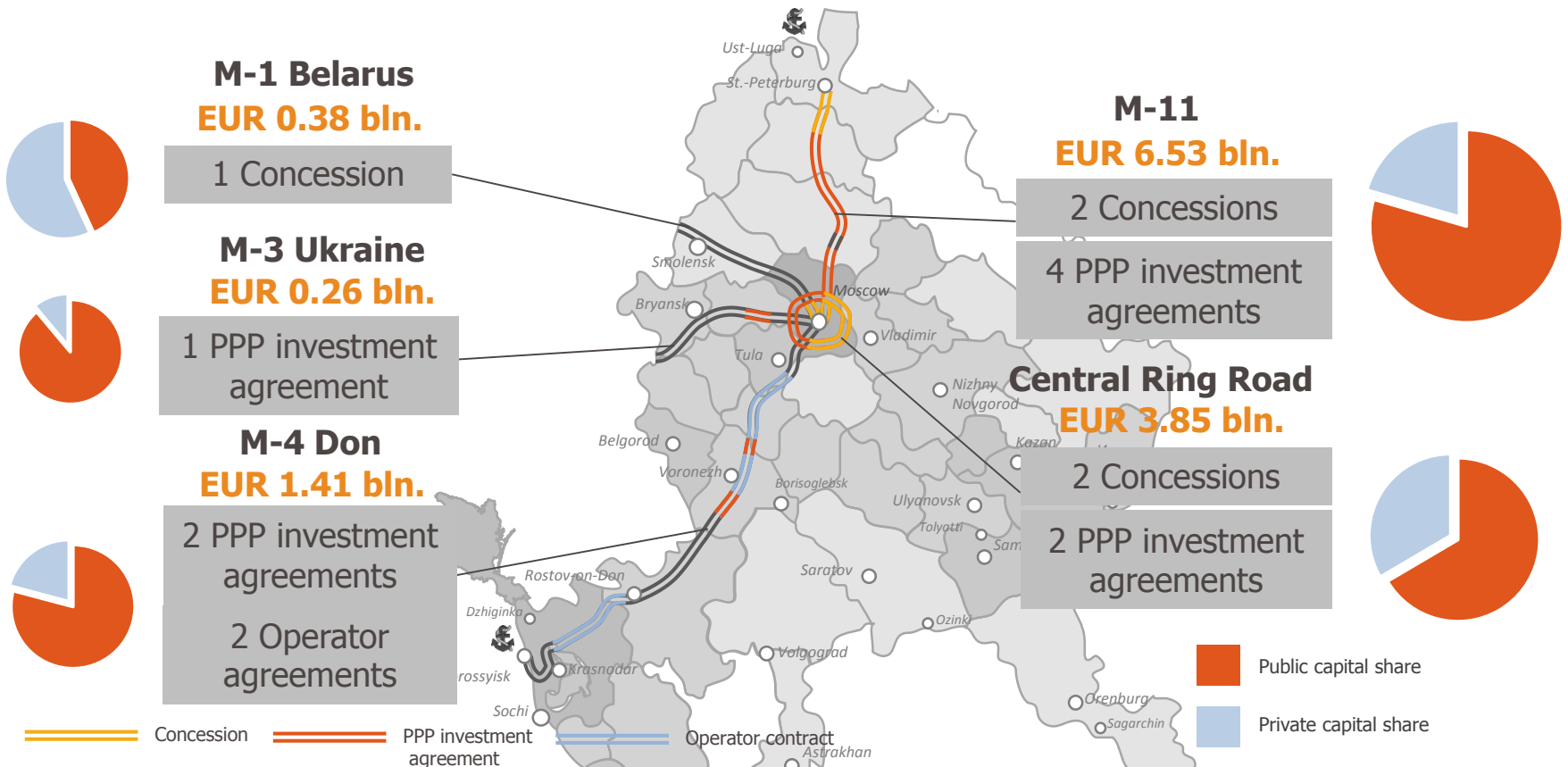
*the first 3 years of operation

** respective years; ex rate EUR/ RUB = 67

▶ AVTODOR EXPERIENCE IN SUCCESSFUL IMPLEMENTATION OF PPP PROJECTS

At the implementation stage :

16 investment projects with a contractual value of over **EUR 12.4 billion ***, raising **the private capital funds** in the amount of over **EUR 3.1 billion**



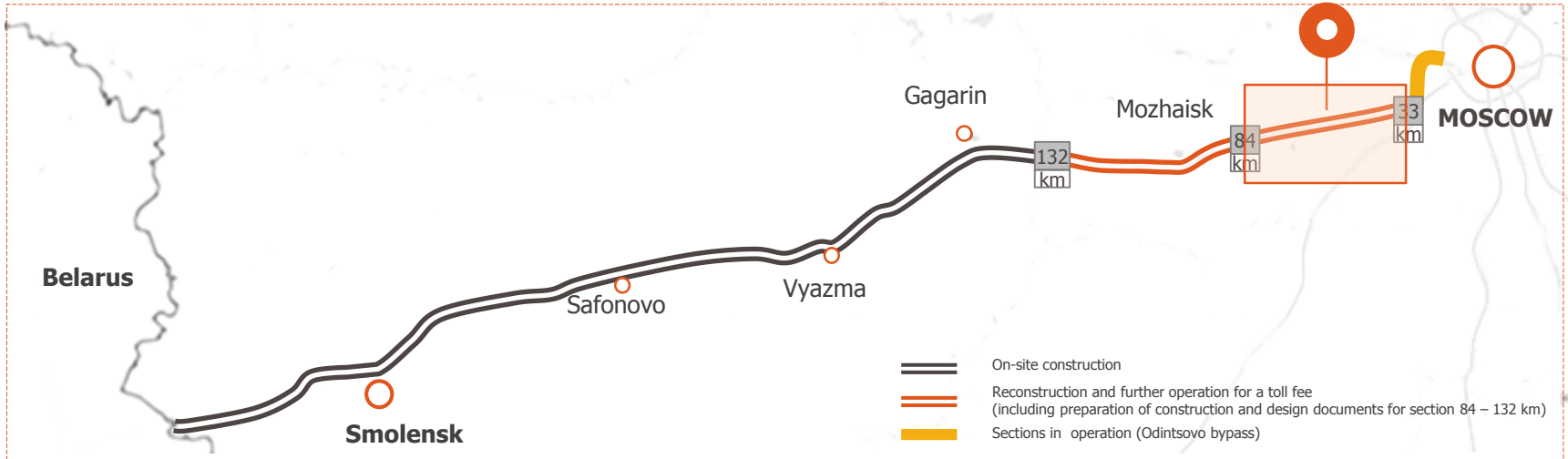
* EUR/ RUB = 67

▶ INVESTMENT PROJECTS PIPELINE

Nº	Project	Length, toll sections (km)	PPP Model	Tender terms	Construction terms	Investments in total, EUR bln.*	Private capital share
1	<u>Reconstruction of M-1 Belarus highway</u> km 33 – km 84	51	Concession	2017	2019-2021	0.81	25%
2	<u>Construction of Far western Krasnodar bypass (M-4 Don highway)</u>	56	Corporate PPP	2018	2018-2020	0.39	100%

* respective years , incl. VAT, ex rate EUR/ RUB = 67

RECONSTRUCTION OF M-1 BELARUS FEDERAL HIGHWAY, SECTION 33 – 84 km



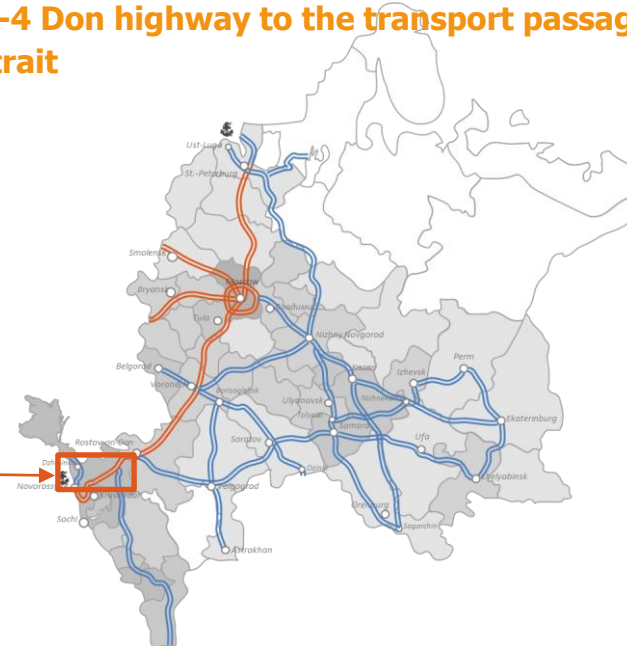
Location:	Moscow region
Length of toll section:	51 km
Traffic volume*:	>20,000 vehicles per day
Road category:	1B
Lanes:	8/6
Total cost**:	EUR 0.81 bln
Public capital:	75%
Private capital:	25%
PPP model:	Availability payment concession
Contract terms:	34 years
Tender schedule:	2017
Construction schedule:	2019-2021

*the first 3 years of operation

**respective years , incl. VAT, ex rate EUR/ RUB = 67

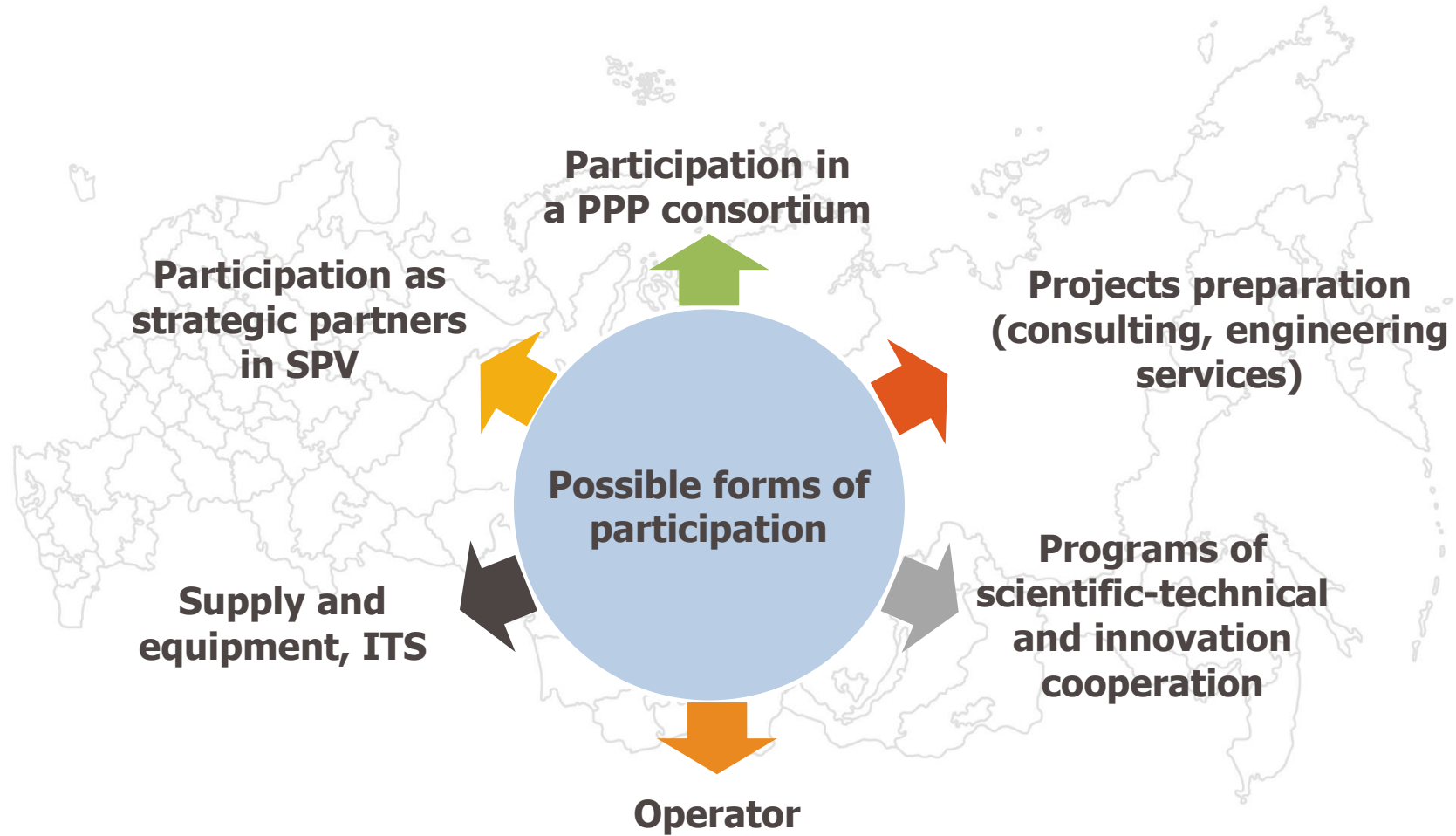
► FAR WESTERN KRASNODAR BYPASS

The construction of Far western Krasnodar bypass highway will allow to withdraw transit traffic from the city limits of Krasnodar and reduce the travel time from the M-4 Don highway to the transport passage through the Kerch Strait



Location:	Krasnodar region	
Length of toll section:	56 km	
Traffic volume*:	24,000 vehicles per day	
Road category:	1B	
Lanes:	4	
Total cost**:	EUR 0.39 bln	
Private capital:	100%	
PPP model:	Corporate PPP	
Contract terms:	30 years	
Tender schedule:	2018	
Construction terms:	2018-2020	*the first 3 years of operation **respective years , incl. VAT, ex rate EUR/ RUB = 67

▶ POSSIBLE FORMS OF PARTICIPATION OF ITALIAN COMPANIES IN AVTODOR PROJECTS





Russian Highways State Company

Address: 9 Strastnoy blvd, Moscow, 127006, Russia

Web: www.russianhighways.ru

E-mail: IR@russianhighways.ru

Phone: +7 (495) 727-11-95

This document does not represent an official offer, statement of basic terms and conditions or an official notification on State Company «Russian Highways» tender's or any other similar document which can oblige the State Company. The document is for information purposes only and has no binding force. State Company «Russian Highways» reserves its right at any time, without any notification to amend, change or delete any information, including essential, containing in this document without any obligation to notify on such changes. State Company «Russian Highways» under no circumstances doesn't bear any responsibility for accuracy, completeness, urgency, timeliness, content, being in demand or that any information containing in this document is correct. State Company «Russian Highways» does not ever bear under any circumstances responsibility for decisions and actions following from this document.